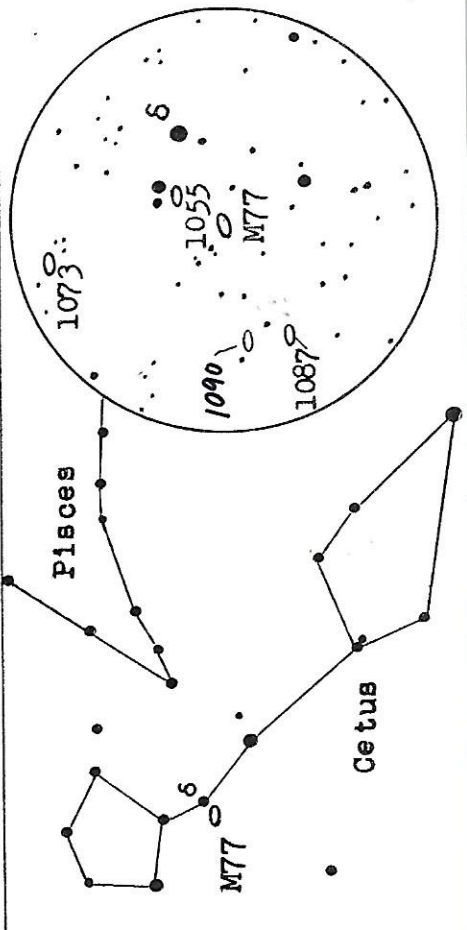
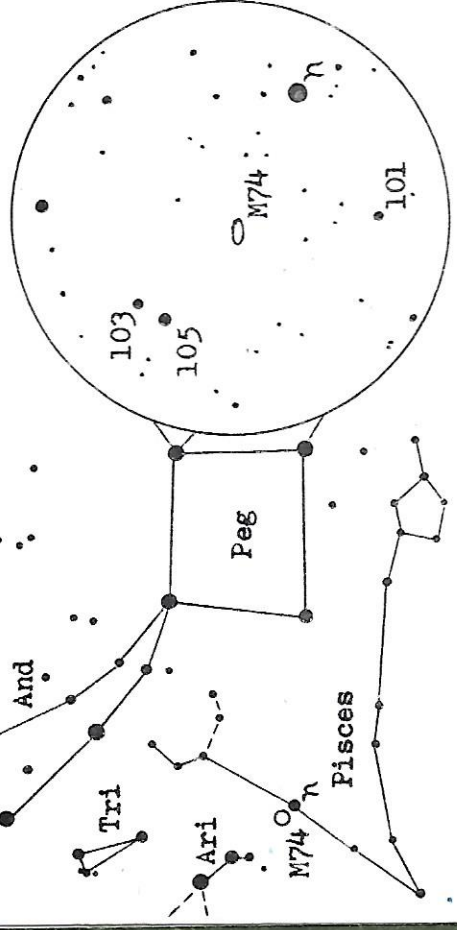


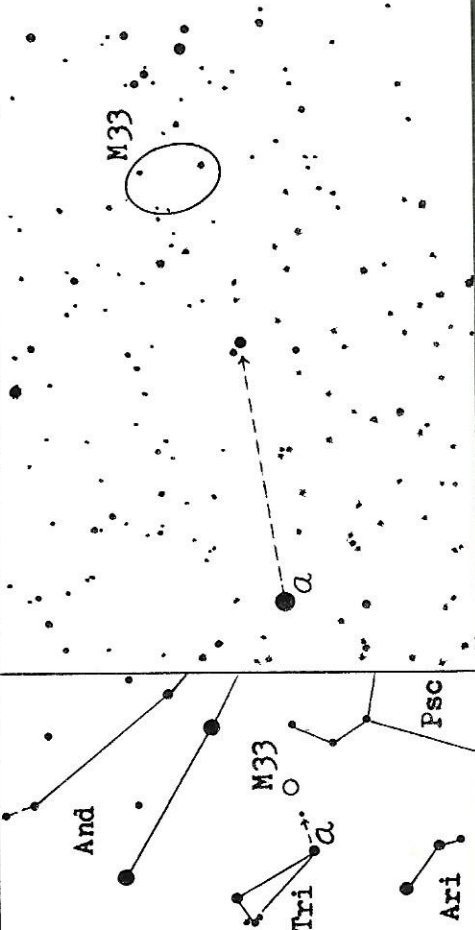
2-Cet	M77	1055	02h39.2m	+00°16'	6.7x1.5'	m11.4p	Sb Gal
		1068	40.1	-00°14'	6.0x5.0'	8.9v	Sbp Gal
		1073	41.2	+01°10'	4.5x4.2'	11.4p	SBC Gal



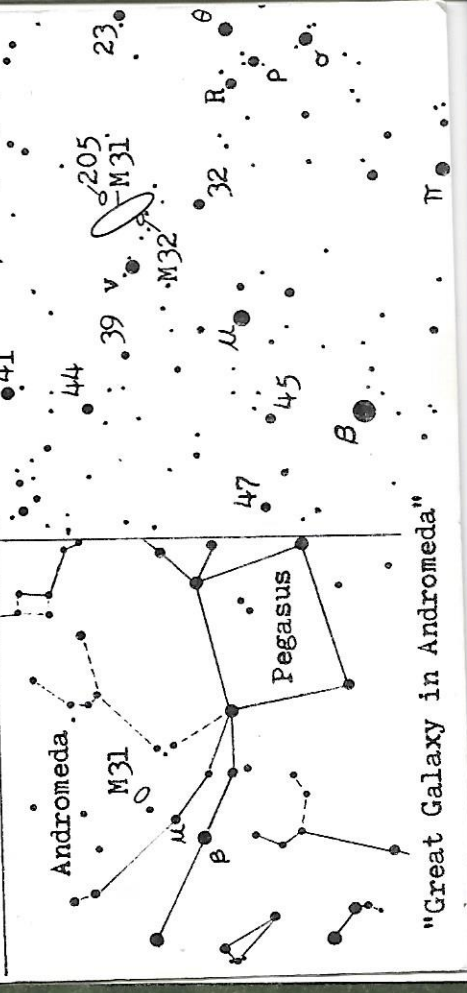
1-Psc	M74	NGC 628	RA 01h34.0m	Dec +15°32'	Nov
			Galaxy Type Sc	Size 10.6x9.0'	Mag 10.2v



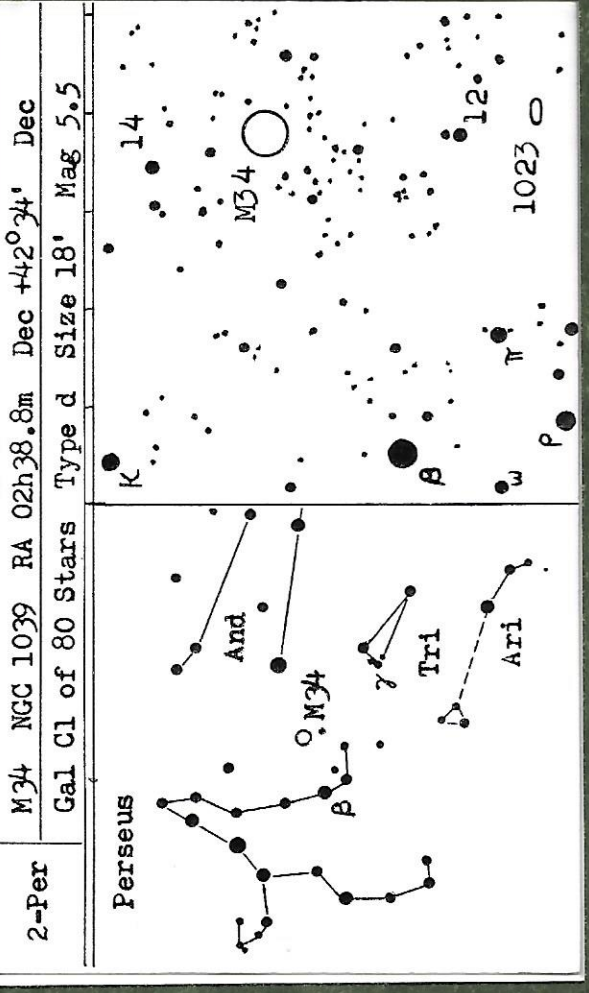
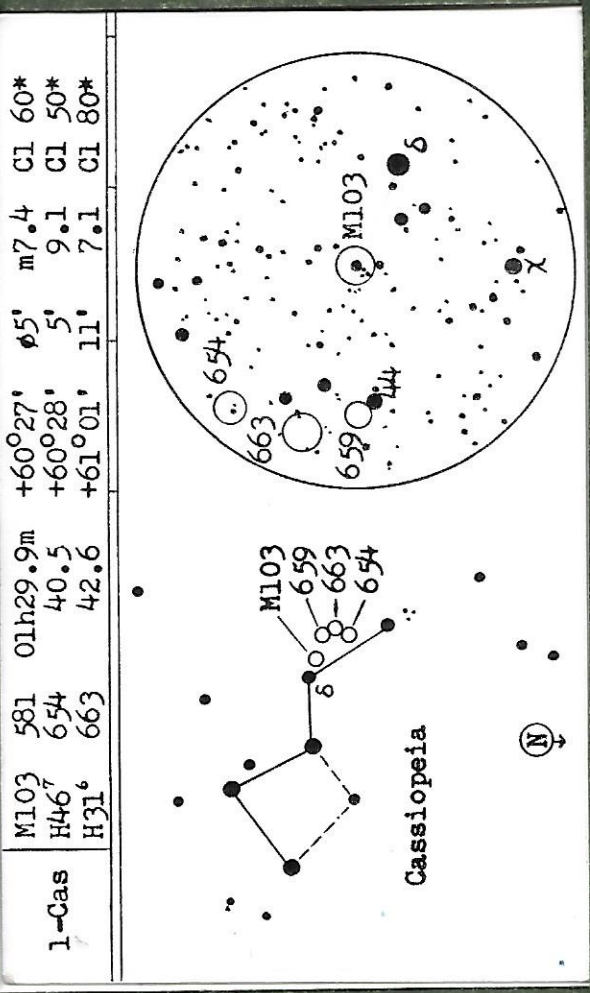
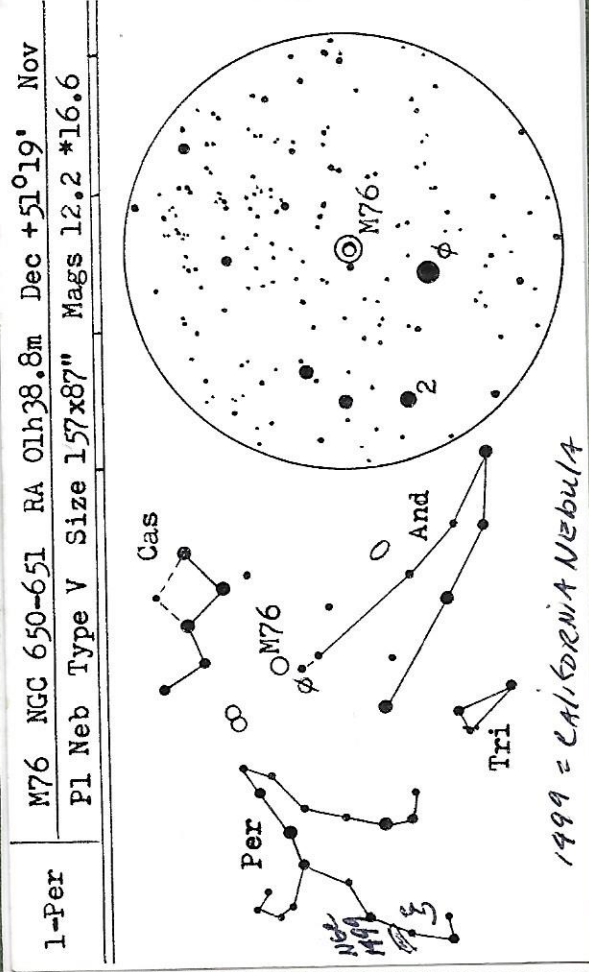
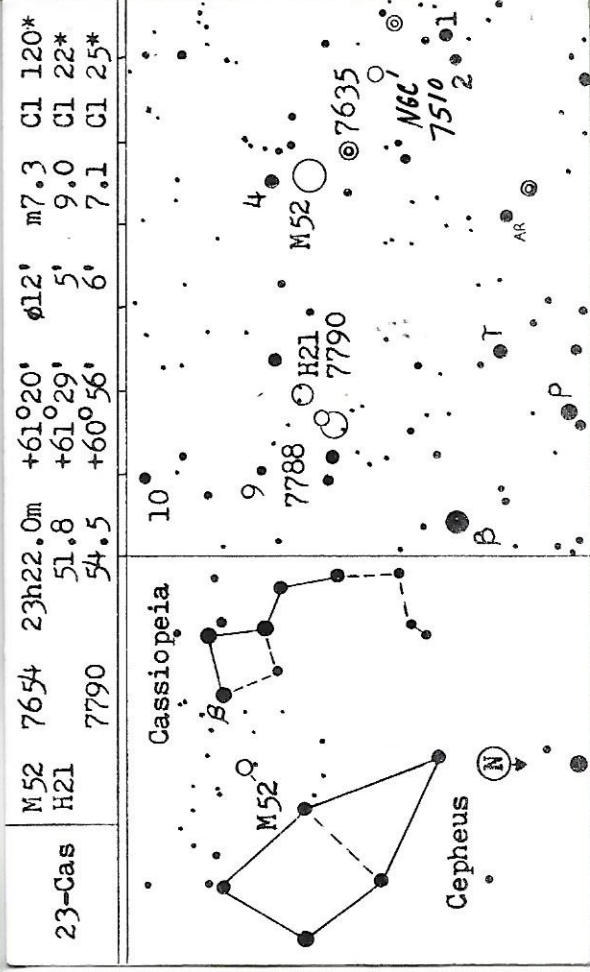
1-Tri	M33	NGC 598	RA 01h31.1m	Dec +30°24'	Nov
			Galaxy Type Sc	Size 65x35'	Mag 6.7v (Difficult)



O-And	M110	205	0h37.6m	+41°25'	10.0x4.5'	m9.4v	E6 Gal
	M31	224	40.0	+41°00'	160x35'	4.8v	Sb Gal
	M32, 221	40.0	+40°36'	3.4x2.8'	8.7v	E2 Gal	

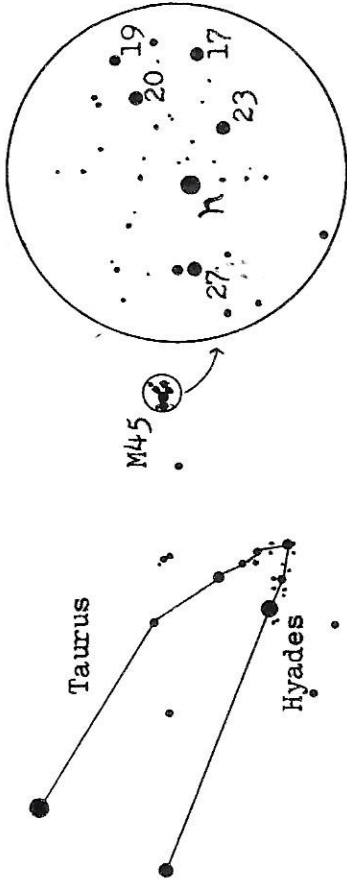


"Great Galaxy in Andromeda"



3-Tau M45 Mel 22 RA 03h43.9m Dec +23°58' Dec
 Neb & Cl of 130 stars Type c Size 100' Mag 1.4

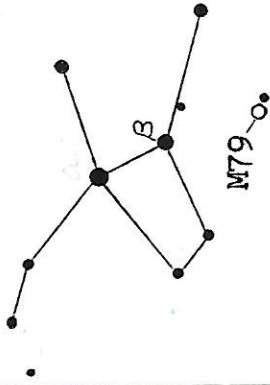
"Pleiades"



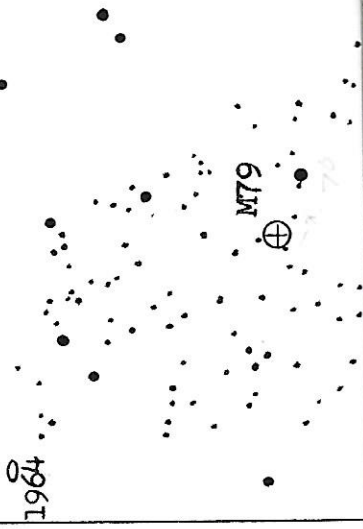
Look for nebulosity around each bright star in Pleiades.

5-Lep M79 1904 05h22.2m -24°34' ø3.2' m8.4v Glob
 1964 31.2 -21°59' 5.4x1.1' 11.6p Sb Gal

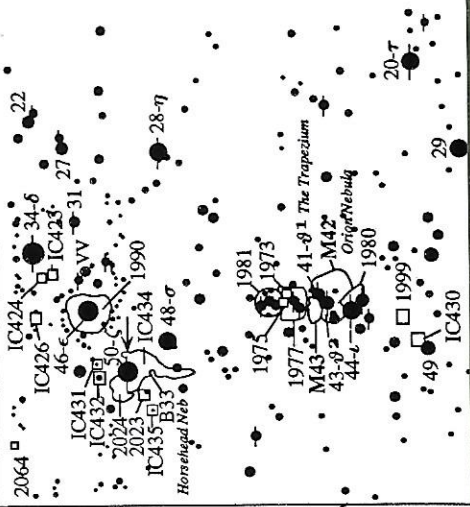
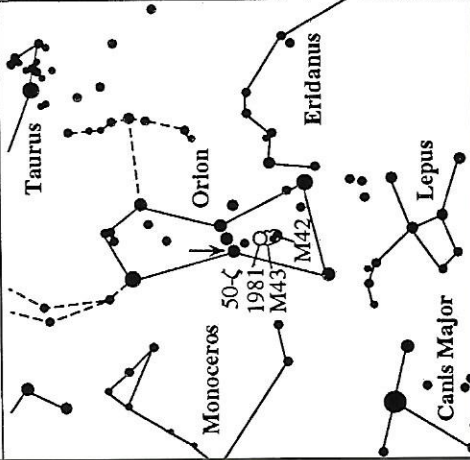
Lepus



1964

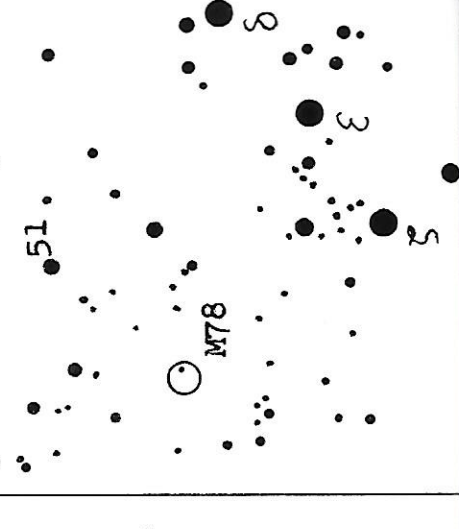
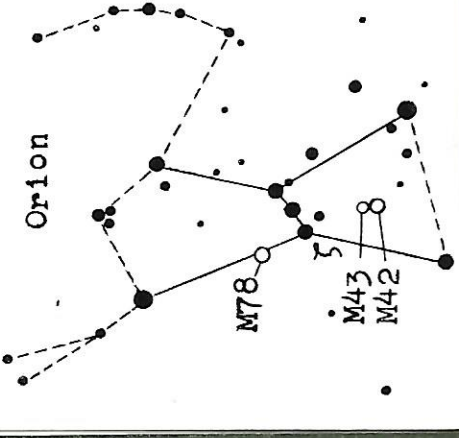


AstroCards 1981 — 05h35.2m -04°26' ø25' m4.6v Open Cluster 20*
 05h-Ori 1976 M42 35.4 -05°27' 65' x 60' 5.0v E + R Nebula
 Deep-Sky Set A 1982 M43 35.6 -05°16' 20' x 15' 9.1v E + R Nebula



5-Ori M78 NGC 2068 RA 05h44.2m Dec +00°02' Jan
 Diffuse Nebula Size 8x6' Mag 10.3v

Orion



5-Tau	M-1 NGC 1952 RA 05h31.5m Dec +21°59' Jan
	Pl Neb Type VI Size 360x240" Mags 8.4 *15.9

"Crab Nebula"

Taurus

Hyades

M1

114

6-Gem	M35 2129 05h58.1m +23°18' ϕ5' m7.2 Cl 25*
	M2158 06h04.3m +24°06' 4' 12.5 Cl 40*
	M35 2168 05.7 +24°20' 40' 5.3 Cl 120*

Gemini

M35

M2158

M2129

μ

1 2 3 4 5 6

Ori

CMi

5-Aur	M38 1912 05h25.3m +35°48' ϕ20' m7.4 Cl 100*
	M36 1960 32.0 +34°07' 12' 6.3 Cl 60*
	M37 2099 49.0 +32°33' 20' 6.2 Cl 150*

Auriga

M38

M36

M37

θ

B

AE

1907

1893

χ

μ

6-CMa	M41 NGC 2287 RA 06h44.9m Dec -20°42' Feb
	Gal Cl of 50 Stars Type e Size 30' Mag 5.0

Canis Major

M41

α

β

γ

δ

ε

ζ

η

θ

ι

κ

λ

μ

ν

ξ

ο

π

ρ

σ

τ

υ

φ

χ

ψ

ω

1

2

3

4

5

6

7

8

9

10

11

12

13

14

15

16

17

18

19

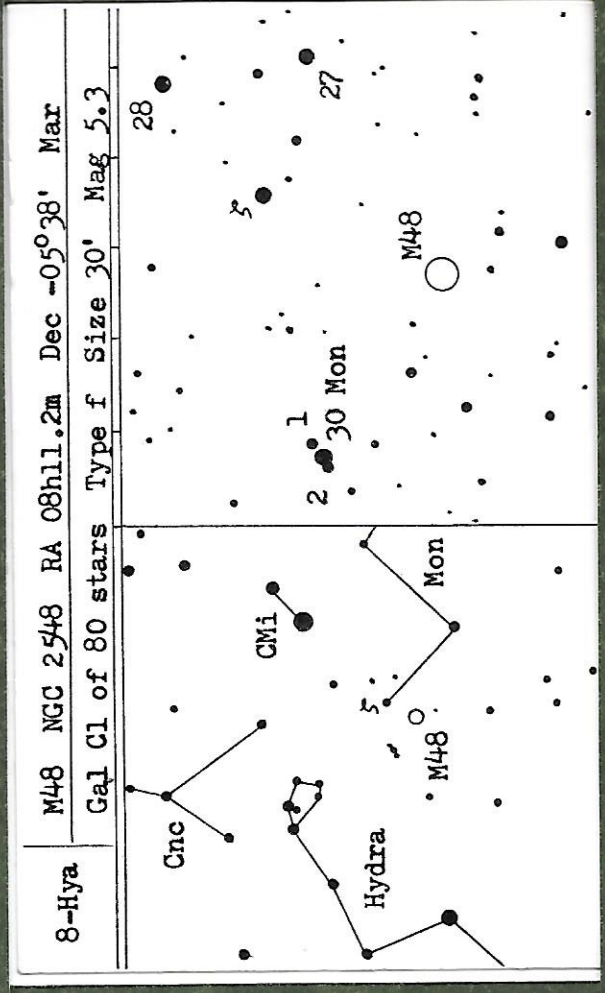
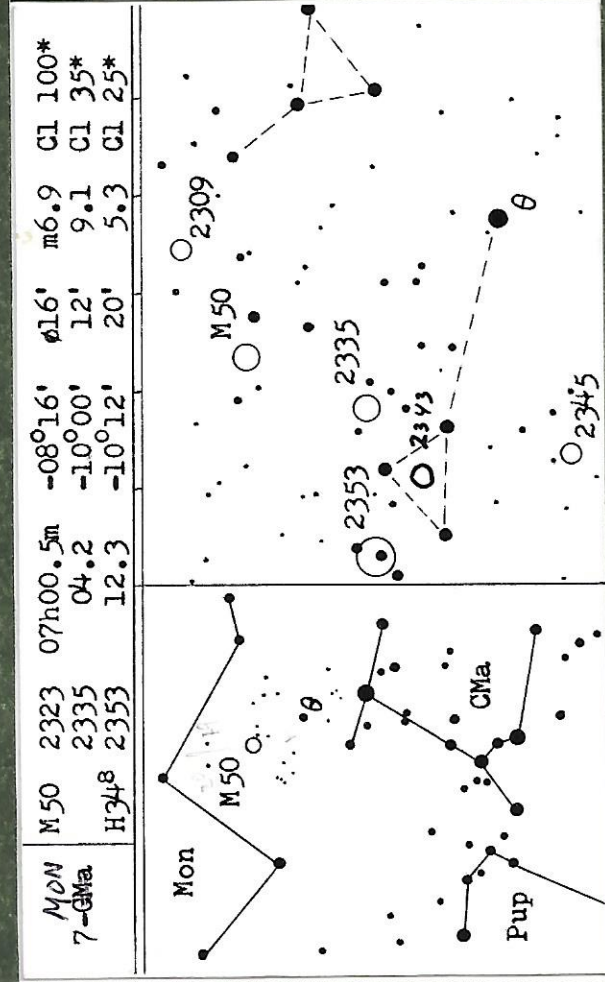
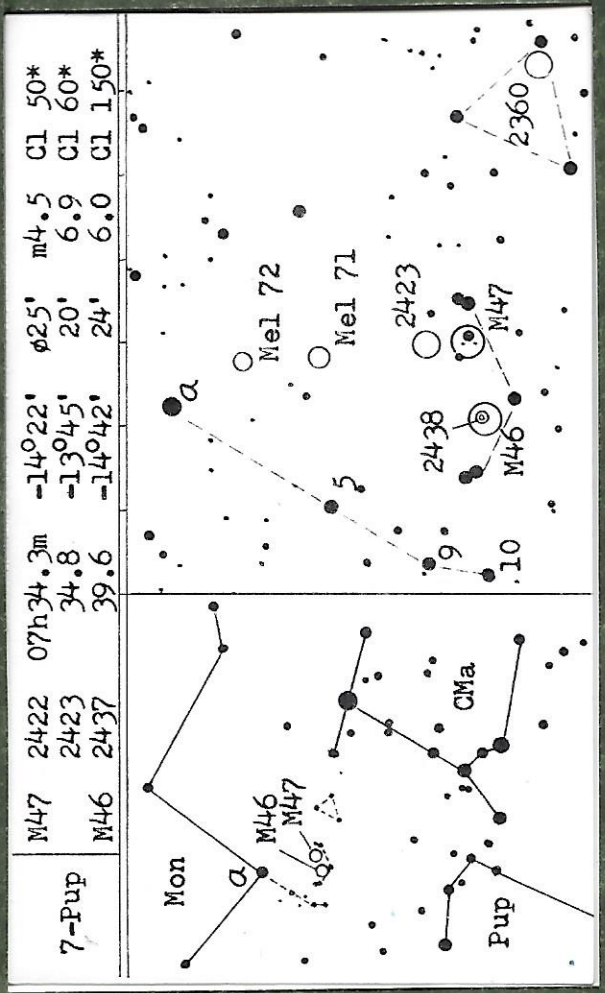
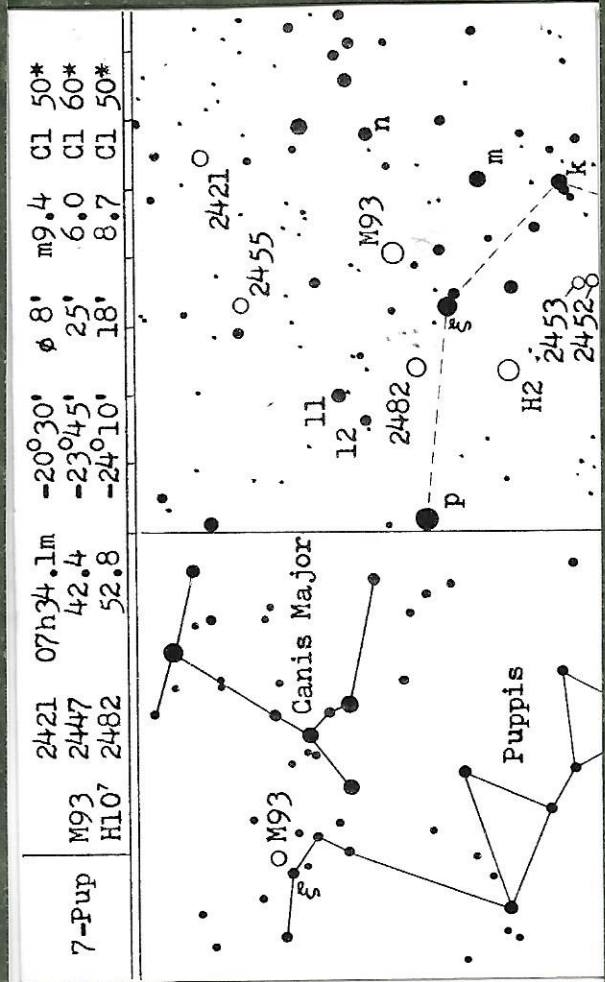
20

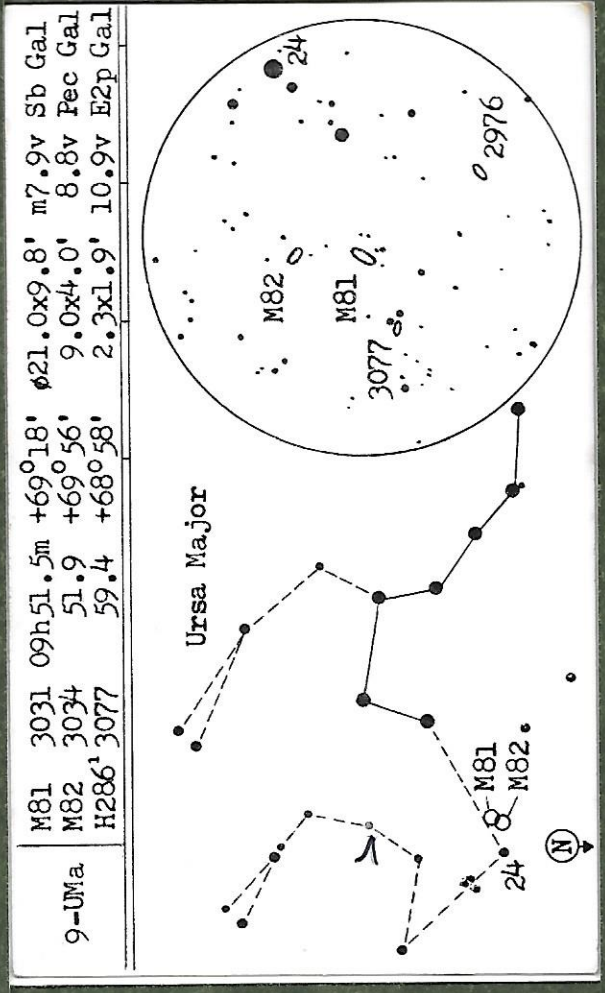
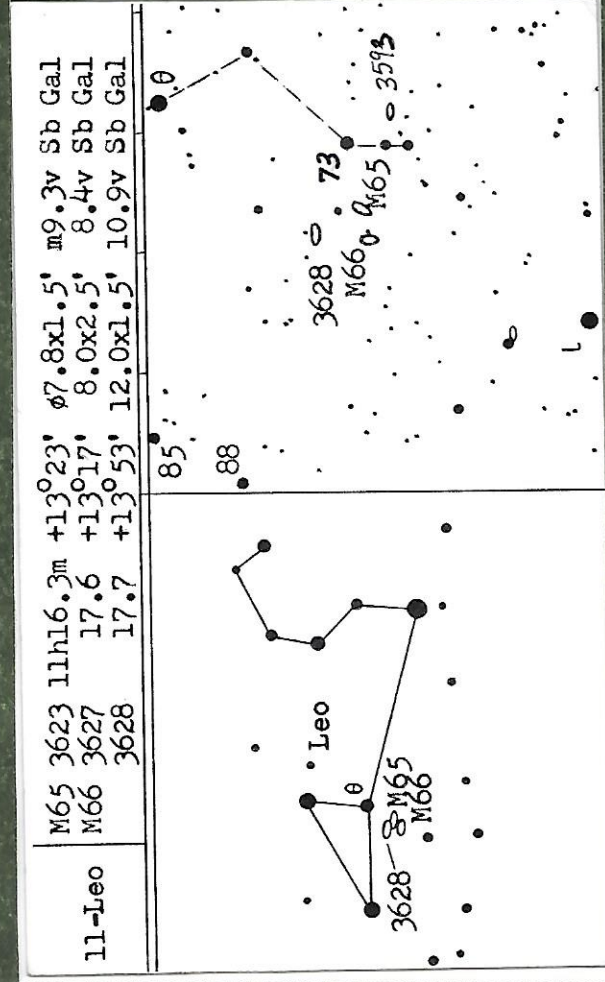
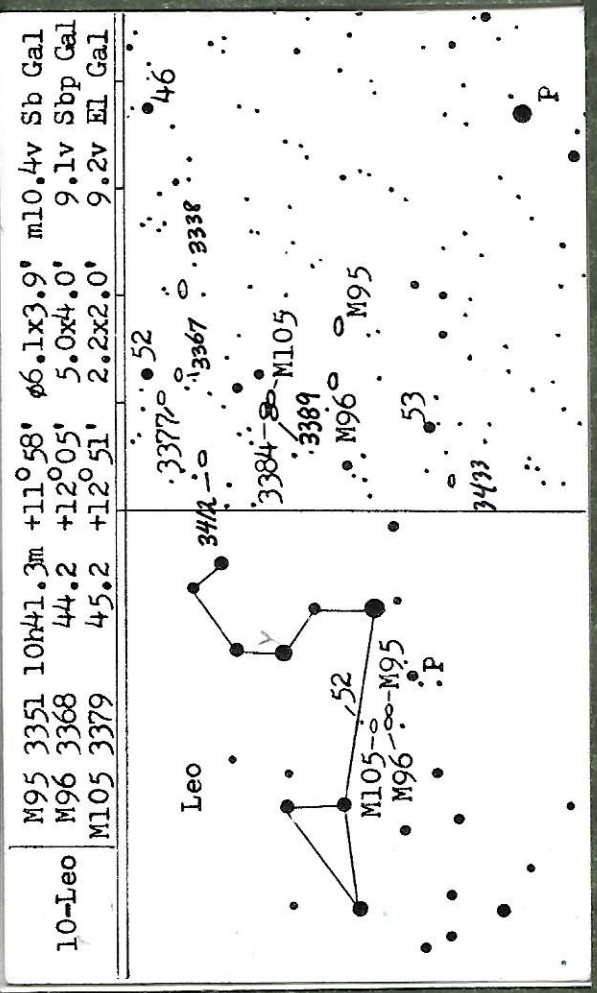
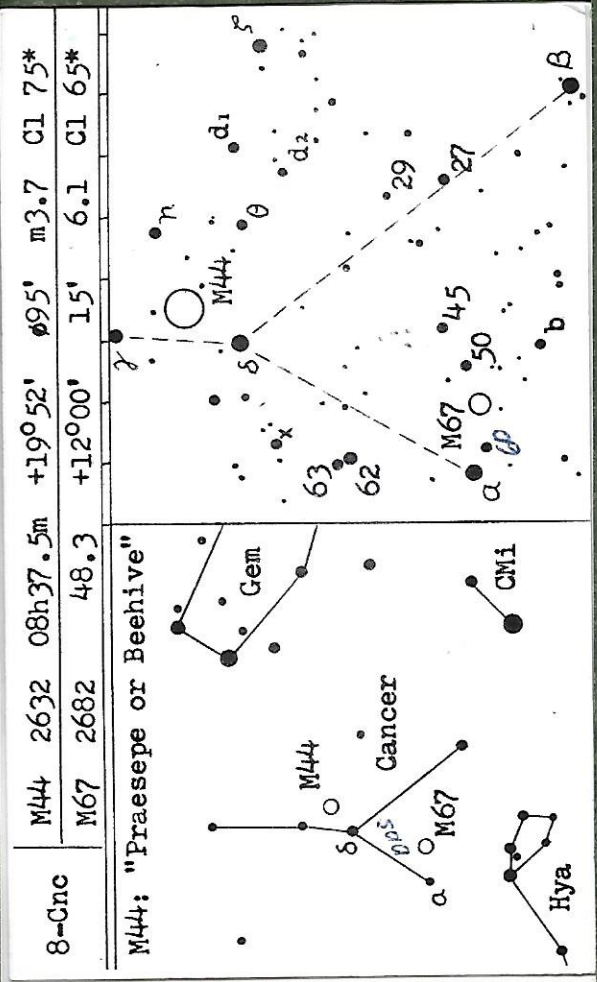
21

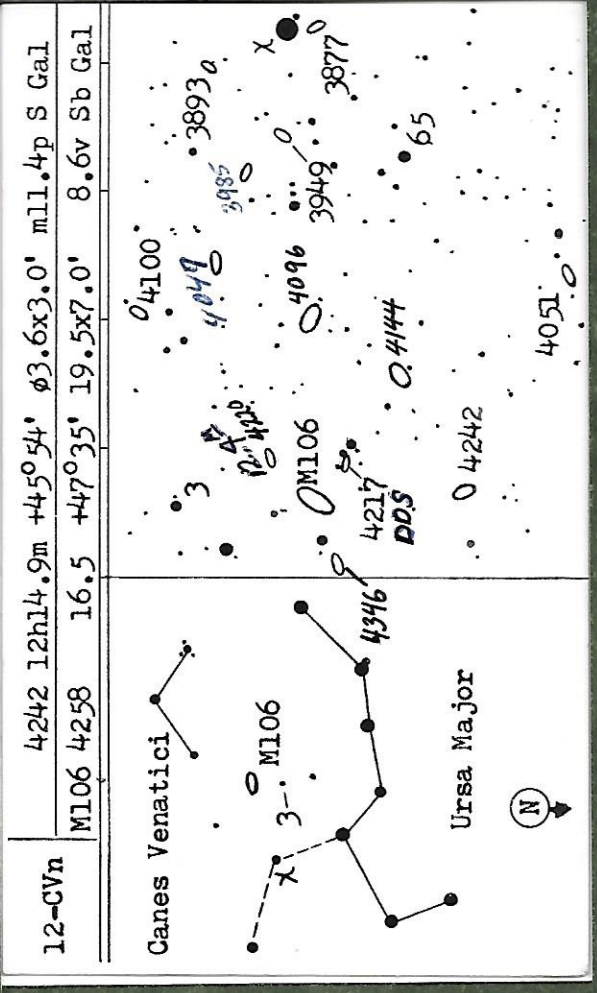
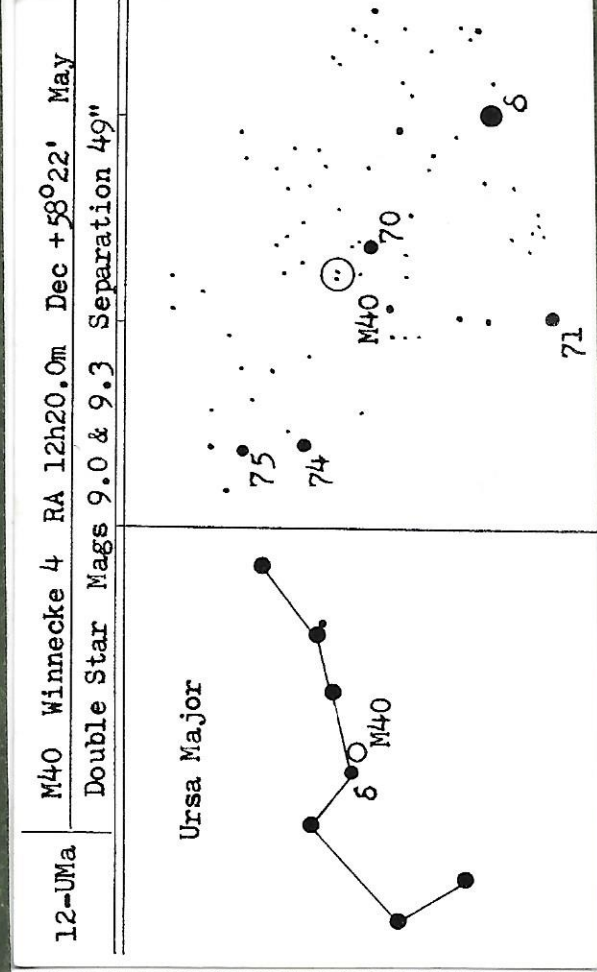
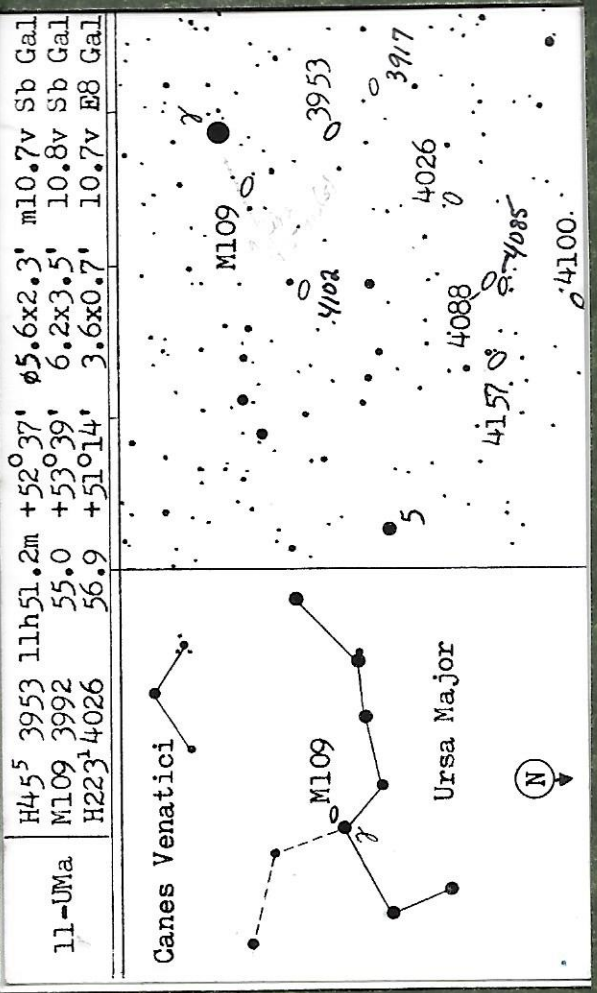
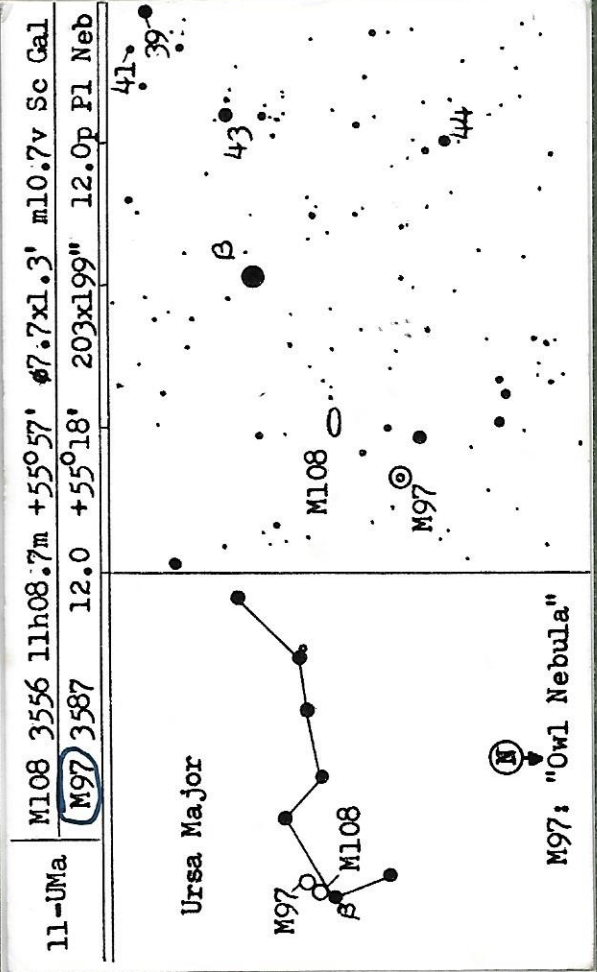
22

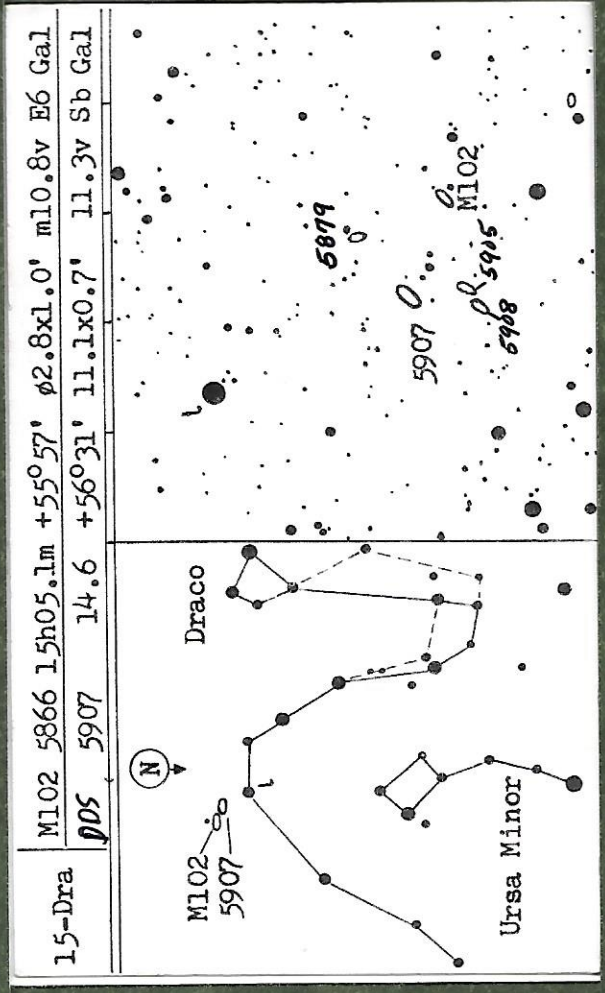
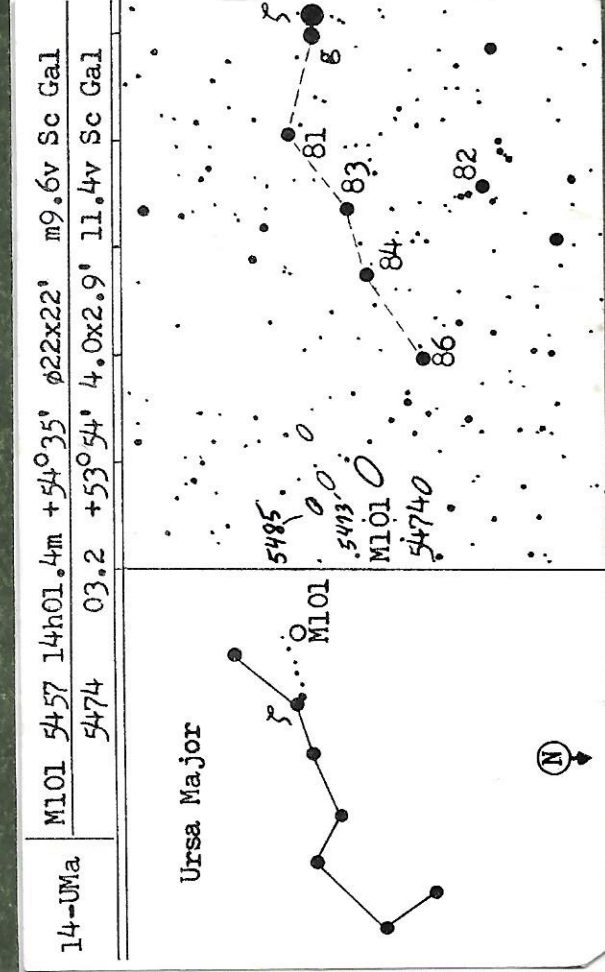
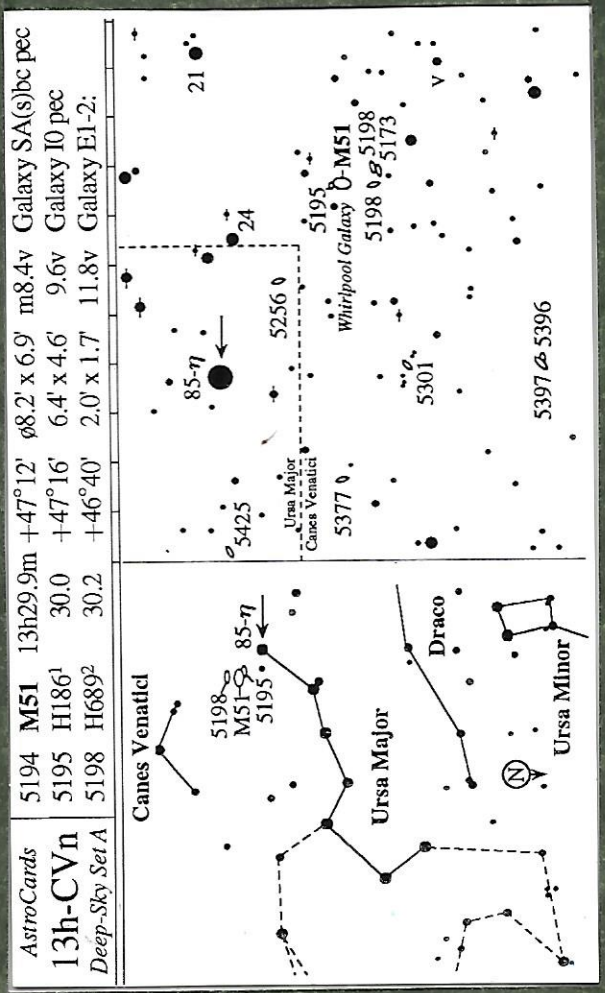
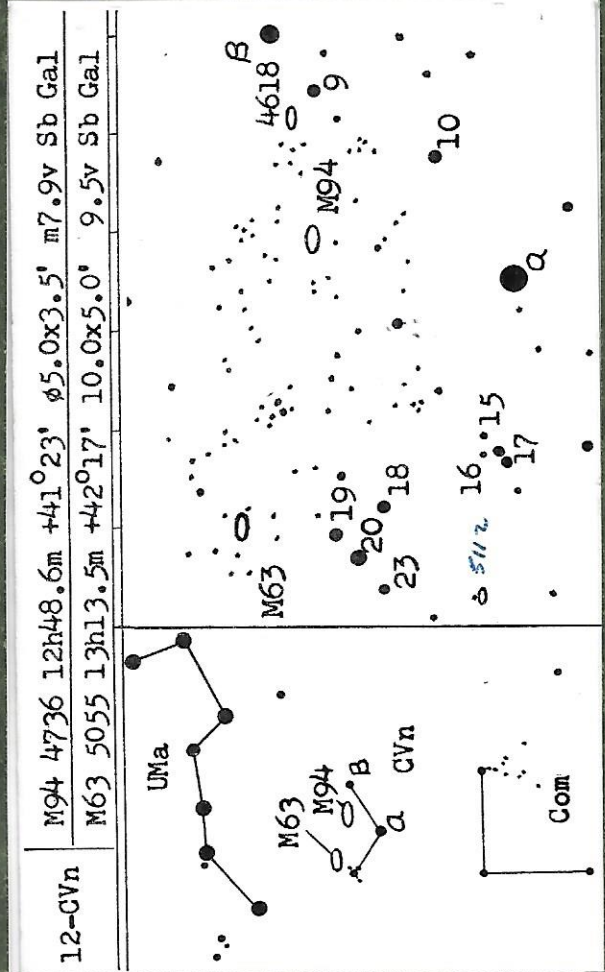
23

24

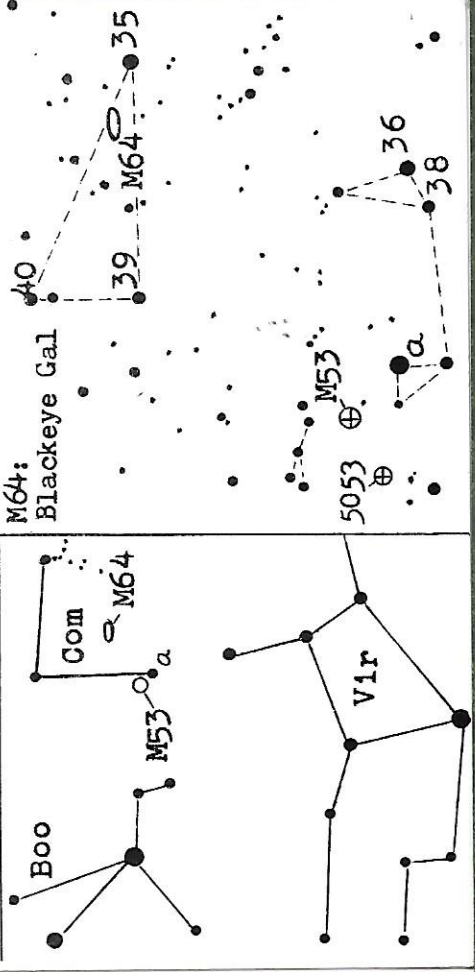








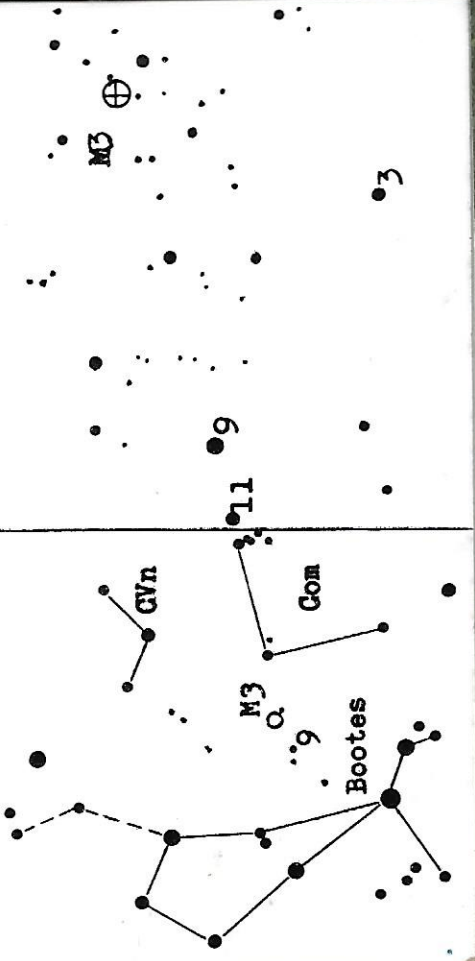
M64 4826 12h54.3m +21°57' 46.5x3.2" m 8.8v Sb Gal
 M53 5024 13h10.5m +18°26' 14.4x3.3" 7.6v Glob
 5053 13.9 +17°57' 8.9x3.5" 10.5p Glob



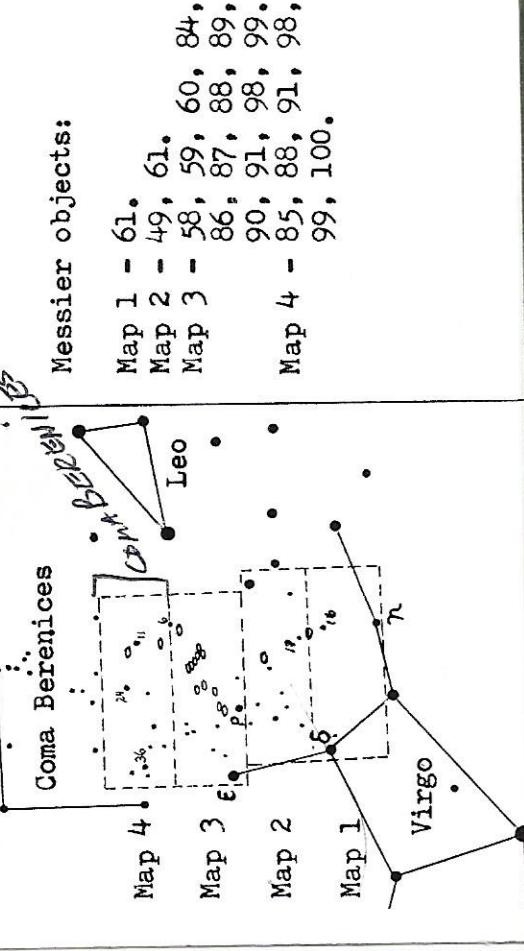
M64:

Blackeye Gal

13-CVn
 M-3 NGC 5272 RA 13h39.9m Dec +28°38' May
 Globular Cluster Type VI Size 9.8' Mag 6.4v



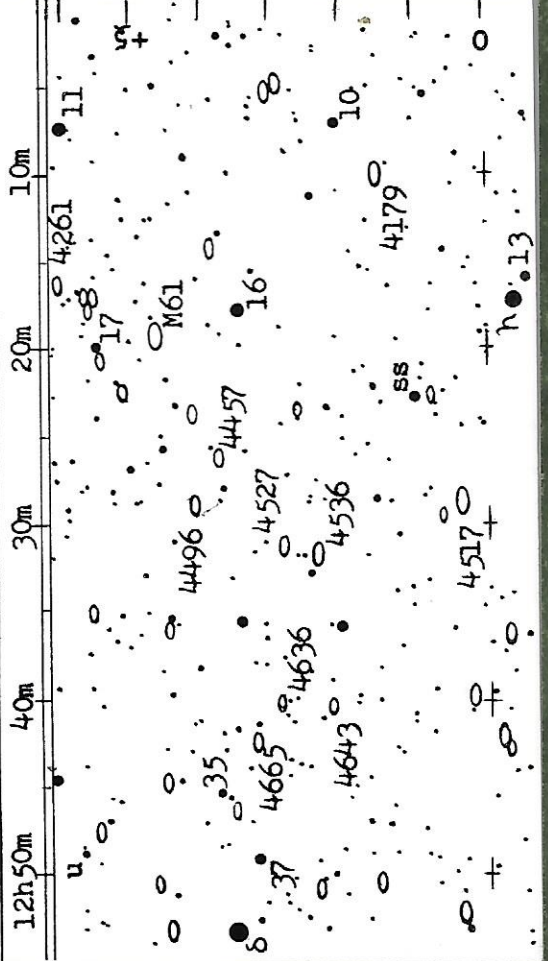
12-Vir
 Coma-Virgo cluster of galaxies



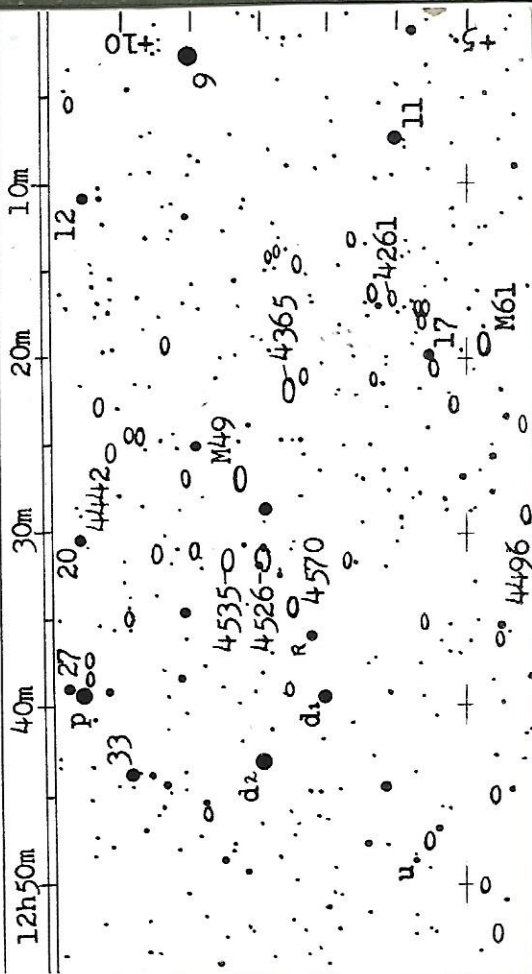
Messier objects:

- Map 1 - 61, 60, 84,
- Map 2 - 49, 61, 59, 88, 89,
- Map 3 - 58, 87, 88, 89,
- Map 4 - 86, 90, 91, 98, 99,
- Map 4 - 85, 88, 91, 98,
- Map 4 - 99, 100.

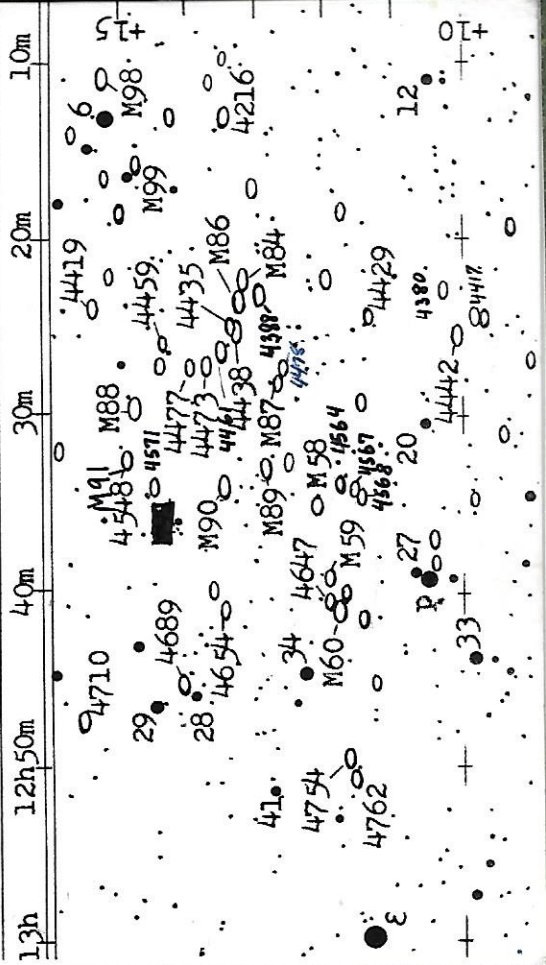
12hr 0 to +5 Coma-Virgo cluster of galaxies (Map 1)



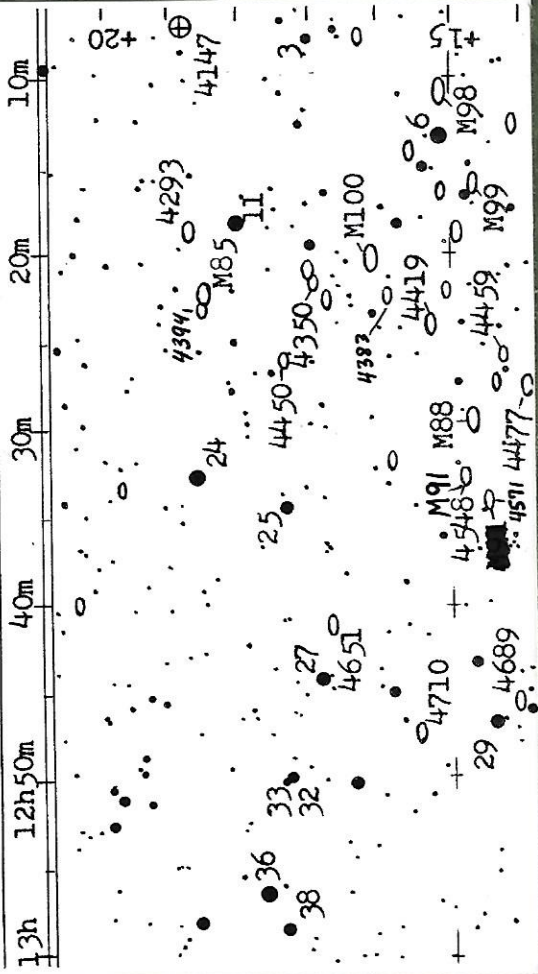
12hr +5 to +10 Coma-Virgo cluster of galaxies (Map 2)



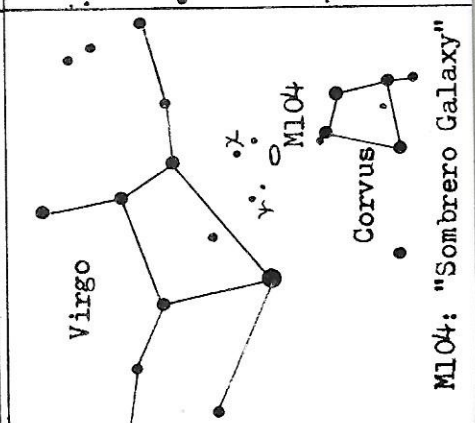
12hr +10 to +15 Coma-Virgo cluster of galaxies (Map 3)



12hr +15 to +20 Coma-Virgo cluster of galaxies (Map 4)



12-Vir	M104	4594	12h37.3m	-11°21'	ø6.0x2.5'	m8.7v Sb Gal
	M129	4699	46.5	-08°24'	3.0x2.0'	9.3v Sa Gal
	M134	4781	51.8	-10°16'	2.3x1.1'	11.2v Sc Gal



M104: "Sombbrero Galaxy"

